

The Junction News

Newsletter of The Junction Public School



Union Street, Merewether. NSW 2291 Ph: 49 631343 Fax: 49 63 3501 E: thejunctio-p.school@det.nsw.edu.au

Term 3 – Week 10

Tuesday 18 September 2012

PRINCIPAL'S REPORT

Week 10 - A very busy and productive term!

I would like to thank all students, parents and teachers for the huge effort all have put in this term. It has been an extremely busy term and very productive. I congratulate all students on their academic gains and particularly participation in the Art Show which really showcased what amazing and creative talents we have in our school. The Art Show will become a bi-annual event and one which I am sure will continue to grow and change.

Student Admin and Support Staff Week (SASS Staff)

I would like to publicly recognize our school admin support staff (SASS) at The Junction Public School. Last week it was SASS Recognition Week. The teaching staff provided a morning tea for our admin staff, Teachers' Aides and General Assistant, Tom in recognition of and as a thank you for the wonderful work they do. We know that everyone looks to providing the best job they can do ...but in this case I want to take a few lines to acknowledge the school admin staff and the fact they have at times a really challenging role in meeting all the needs of such a large community and student population. Our admin staff, including our Teachers' Aides and General Assistant are all exceptional people who go well beyond their role descriptions in trying to meet the needs of all. The office area itself is an extremely busy place and we are very fortunate to have such caring professional staff members who do an outstanding job in running this school day in and day out. Please take the time to say thank you to them this week if you are in the office area or around the school - they will really appreciate it.

Playground Rules and Student Welfare

Last week the teaching staff reviewed and further refined the playground rules for students and we thought it would be useful for parents to be aware of these structures:-

• Car Park Areas

*It is extremely important that we bring to the attention of all parents and students that the car park entrances at the front and back of the school are **NOT** to be used by students for entering and leaving the school grounds. The reasons for this are more than obvious. We are really concerned at the number of students and parents using these areas for entry and exit at school times and*

*the risk of an accident to students and parents is very worrying. Parents please review with your children that if entering or exiting the school from Watkins Street that the pedestrian gate nearest the crossing is the **ONLY** exit and entry point. If entering or exiting from Union Street the double gates nearest the old hall **are NOT** to be used but rather the double gates and pedestrian gates nearest the admin block **ARE** to be used.*

• Arriving at School

We ask that students do not arrive at school before 8.30am each morning as staff are not rostered on duty before this time. When students arrive we ask that all students sit in the COLA area until the 8.40am bell when they can then go to place their bags outside their classrooms. Students may then go and play in the quadrangle - the COLA area or netball courts area until the 8.55am bell.

• Out of Bounds Areas

We ask that students stay in safe areas and avoid out of bounds areas at all times throughout the day. At play times specifically, we tell students that if 'they cannot be seen - then they are most likely to be out of bounds'. Examples of this are:

- Behind the hill area in the big playground
- Behind the toilets nearest the demountables
- In the demountable walkways at recess and lunchtime
- Car park areas
- Front of admin block unless coming into the office

Book Week Parade

Looking forward to seeing all students participating in the Book Week Parade this coming Friday beginning at 9.30am for Kinder to Year 2 in the new hall – followed by Years 3 to 6 at 10.15am.

This is always a highly anticipated event and well participated in by all students. There will be a morning tea available at the canteen from 11.00am.

Hope you have a wonderful holiday break with your families and look forward to working with you all next term. There is NO staff development day on the Monday of term 4. All students return to school on Monday 8th October. Thanks.

**Wendy Cheek,
Principal**

CALENDAR - TERM 3 – 2012**Week 10****Event****Friday, September 21** Book Week Parade – 9.30am**Friday, September 21** Last day of Term 3**School Holidays****Event****Saturday, October 6** Olive Tree Markets – 9am-3pm**CALENDAR - TERM 4 – 2012****Week 1****Event****Monday, October 8** STAFF & STUDENTS RETURN FOR TERM 4**Tuesday, October 9** P & C Meeting – 7pm**Thursday, October 11** Year 1 & 2 students commence Intensive Swimming Program**PREMIER'S SPELLING BEE**

Last Tuesday four students from our school participated in the Hunter Regional Finals of the Premier's Spelling Bee. The students firstly won selection in their class before gaining selection for their stage.

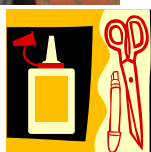
Congratulations to Chris B and Archie C who were the Stage 2 competitors. Chris was placed 4th in the Regional Final.

Olivia Z and Erin H competed in the Stage 3 section.

Congratulations to Erin who came equal 4th. Well done!

**KINDERGARTEN 2013**

If parents of Kindergarten 2013 students have completed their Enrolment Forms and have other paperwork required ready, could you please bring them into the office so we can start to enrol your child. Thank you

**SPECIAL MENTION AWARDS****Term 3 Week 9****YEARS 1 & 2 ASSEMBLY**

1CR	Connor F	Keeley S
1J	Jayavi G	Ryan T
1L	Lucia P	Caleb M
1/2H	Lily F	Joe P
2C	Stephen P	Tilly R
2B	Sylvia K	Joel W
2M	Kaj H	Sam T
2W	Sam S	Malika K

YEARS 3, 4, 5 & 6 ASSEMBLY

3/4C	Daniel M	Joshua T
3W	Jackson B	Lucy U
3MC	Edward D	Zack J
4A	Thomas F	Darcy O'D
4L	Mackenzie P	Bailey R
6/5F	Garry P	Sam C
6/5B	Nicholas M	Taleaha S
6/5S	Erin H	Jacob J
6/5T	Jack J	Kiara M
6/5C	Karl F	Samara F
Choir	Kushi P	Jade D

SCHOOL UNIFORM SHOP

Open Monday mornings only from 8.45am to about 9.15am in the Old School Hall. If you are unable to make it then, you may pre-order and make payment in an envelope and leave it at the office. Orders will be filled on the Monday and given to students. Payment for orders is by Cash or Cheque only – Cheques payable to: The Junction School P & C. Please note there are no EFTPOS facilities for purchases in the Uniform Shop. If you purchase second hand items please ensure you remove any other child's name from the clothing and clearly write your child's name on the item.

SCHOOL BANKING – Newcastle Permanent Building Society and Commonwealth Bank

Student Banking for Newcastle Permanent Building Society and the Commonwealth Bank is on a Monday. Students need to take their banking to the library immediately after roll call.

BAND NEWS - 2012 Bandfest

We are still waiting for the timetable of our 4 bands' performances. All we know at present is that Bandfest is happening in Week 2 of next term, probably on the Tuesday and Wednesday for primary schools. As soon as we receive the information, notes will be sent home and it is essential that money and permission notes are returned promptly. Thank you, Mrs Fitzgibbon

BLACKBUTT EXCURSION – YEAR 1

On Friday, Year 1 had a lovely day at Blackbutt Reserve. We had two rangers that took us for a walk through the rainforest where we saw some bats and the different layers of a rainforest. The mystery boxes were a lot of fun especially Spiky Mikey the Bearded Dragon. After that we patted the very cute Koala and fed the hungry Emus. We had a wonderful day!



P & C NEWS

It's hard to believe that it's the last week of term! I hope you have some lovely plans for the holidays.

Olive Tree Market BBQ – Saturday, 6 October

We are short on volunteers (the Saturday before school starts for term 4). This is traditionally a busy market, as people start thinking of buying gifts for the holidays.



If we don't have our volunteers in place this week, we'll have to miss this fundraising opportunity.

Thanks to those parents who have already stepped up, we need 8 more people. Can you spare an hour and a half? We have three shifts still needing parents:

(10am - 11:30am) (11:30am - 1pm) (1pm - 2:30pm)

This month was Kindergarten, but any year parent will do... Perhaps you weren't able to help out the month when your child's year was rostered? So, recruit a friend and catch up while you help raise some money for the school.

Where does the BBQ money go? We're putting it to good use. This year the P&C is funding everything from library books to ambulance insurance to iPad applications. And more! Please, if you have a bit of time on Saturday respond to me, or our BBQ coordinator extraordinaire, Liz Ginter on 0411 487 713 or elizabeth-g@bigpond.com. Our deadline is Wednesday morning to cancel our participation, so if we haven't heard from enough people by then we'll have to miss this opportunity.

Next P&C Meeting – Tuesday 9 October, 7pm.

P&C meetings are held the first Tuesday of every month, except during school holidays. Please note that in October, the meeting is on the 2nd Tuesday. This will be the second day of term 4. Everyone is welcome to attend. Meetings are held in the school's staff room, down the hall from the Front Office. If you have an agenda item, please send it to me.

Kids Art - Calendars and iPhone covers for Christmas Fundraiser

Thanks to Danielle Carney for volunteering to be the coordinator for the Calendar fundraiser. We are now looking for helpers! If you're interested, please send me an e-mail and I'll forward it to Danielle: junctionpandc@hotmail.com. You should receive information home the first week of next term.

2013 – P&C Executive and you

The Junction Public School P&C:

- does fantastic fundraising for the benefit of the students,
- keeps communication between the school and parents robust, and
- builds the school community.

Get involved! The P&C positions of President, Vice-President and Treasurer will be vacant next year. We are still looking for interested and energetic people for these roles. More information on the roles of P&C Office Bearers is available on the NSW P&C Federation website:

<http://www.pandc.org.au/faq.seo>. The JPS P&C by-laws restrict executive terms to two years. This means 1) these positions **must be filled by new people** in 2013 and 2) if you volunteer for a position, it will be for a maximum of two years.

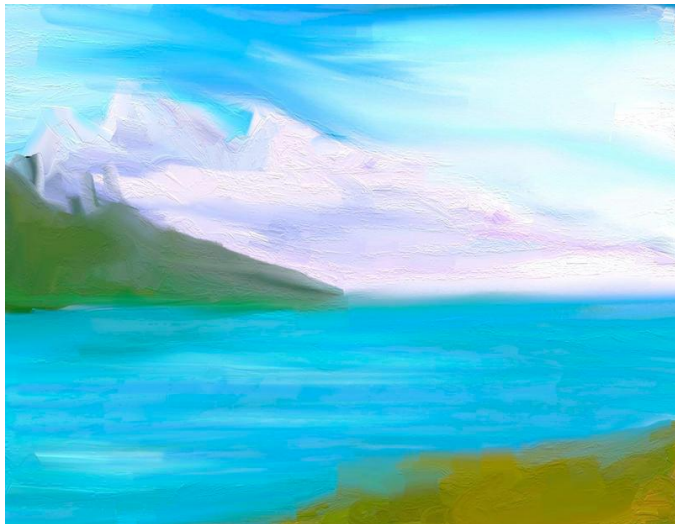
P&C EMAIL LIST - Please send me a note at junctionpandc@hotmail.com if you would like to be on the P&C email contact list. You will receive notices of P&C meeting, as well as the agenda and minutes. This is a great way to keep up with the P&C and stay involved in school. Regards, Karla Karinen, TJPS P&C President

The Junction kids' page

Artwork by Madeline C Class 6/5B



Artwork by Holly H Class 6/5B



Artwork by Erin G Class 6/5B



School!

Each week day we come to school,
A place where we learn important rules.
A place to learn and have fun,
You will be stunned by your abilities.
Every day getting more facilities and activities,
To increase your capabilities.
Having more responsibilities,
For a world with more possibilities.
We have lots of sport,
And even more support.
Meeting new friends,
That are too nice to comprehend!

By Holly H

Jokes!

Q: What did the pirate say when we had a heart attack?

A: Arr me hearties!

Q: Why did the bicycle lie down on the road?

A: He was too tired!

Q: What is the fruitiest subject?

A: History because it's full of dates!

Q: What happened to the scientist that put dynamite in his refrigerator?

A: It blew his cool!

By Holly H

"I am Hungary!" "Maybe you should Czech the fridge." "I'm Russian to the kitchen China find some food." "Maybe you will find some Turkey." "We have some but its covered in a layer of Greece." "Ew there is Norway I can eat that!" "I think I'll settle for a can of Chile." "That sounds appetizing, I would love a Canada Chile as well!" "Denmark your name on the can!"

By Holly H

SCHOOL HOLIDAY PROGRAM

Holiday Kids Club

ANew Church

Tuesday 25th September to Thursday 27th September

9am to 3pm - Children in Year 1 to Year 6

Cost \$10 per day (or \$25 for three days) Morning Tea and Lunch is included.

Registration is essential: Contact Anabelle Copeman on 0424 424589 or anabelle@anewchurch.org.au

www.anewchurch.org.au

Information for school communities about measles

Sydney is currently experiencing an outbreak of measles which began in April 2012 and is centred in the South Western Sydney and Western Sydney regions. Many of the cases have been high school students, with a smaller number in primary school. There is potential for the measles outbreak to spread further given young people have large social networks both within and outside of school. NSW Health advises that measles is a serious viral illness that mainly affects unvaccinated children, teenagers, young adults, and babies too young to be vaccinated. Measles is highly infectious and can easily spread through the air.

Immunisation is effective in preventing the disease. In Australia, infants and young children are vaccinated with measles-mumps-rubella vaccine at 12 months and 4 years of age. People who are at risk of measles include:

- Infants <12 months who are too young to have been routinely vaccinated
- Older children who have not received 2 doses of measles-containing vaccine
- Adults born during or after 1966 who have not received 2 doses of measles-containing vaccine and haven't had measles infection in the past.

Immunising older siblings and non-immune adults will help prevent the spread of infection to infants who are too young to be vaccinated and who are at risk of severe disease.

The first sign of measles is a high fever which usually begins about 10 to 12 days after exposure to a person with measles (range 7-18 days). A runny nose, cough, red and watery eyes (conjunctivitis), and small white spots inside the cheeks can develop in the initial stage. The rash appears around 14 days after exposure, usually starting on the face and upper neck and spreading over the body, hands and feet. The rash lasts for 4-7 days.

IMPORTANT INFORMATION:

People with measles are usually infectious from just before the symptoms begin until four days after the rash appears. If you have had contact with someone who has had measles and develop a fever, runny nose, cough, red and watery eyes, it may be measles and seek medical advice.

If you suspect measles, see your doctor, clinic or hospital. It is important to ring before your consultation so you can be seen as soon as possible and arrangements can be made to avoid contact with other patients in the waiting room who may be susceptible to measles.

A person with measles should remain at home until four days after the rash appears to reduce the possibility of spreading it to other people.

Further information about measles can be found on the NSW Ministry of Health website at:
<http://www.health.nsw.gov.au/factsheets/infectious/measles.html>